

MARBLE



MORE

SPECIAL
FINISHES

Follow us



A total natural look

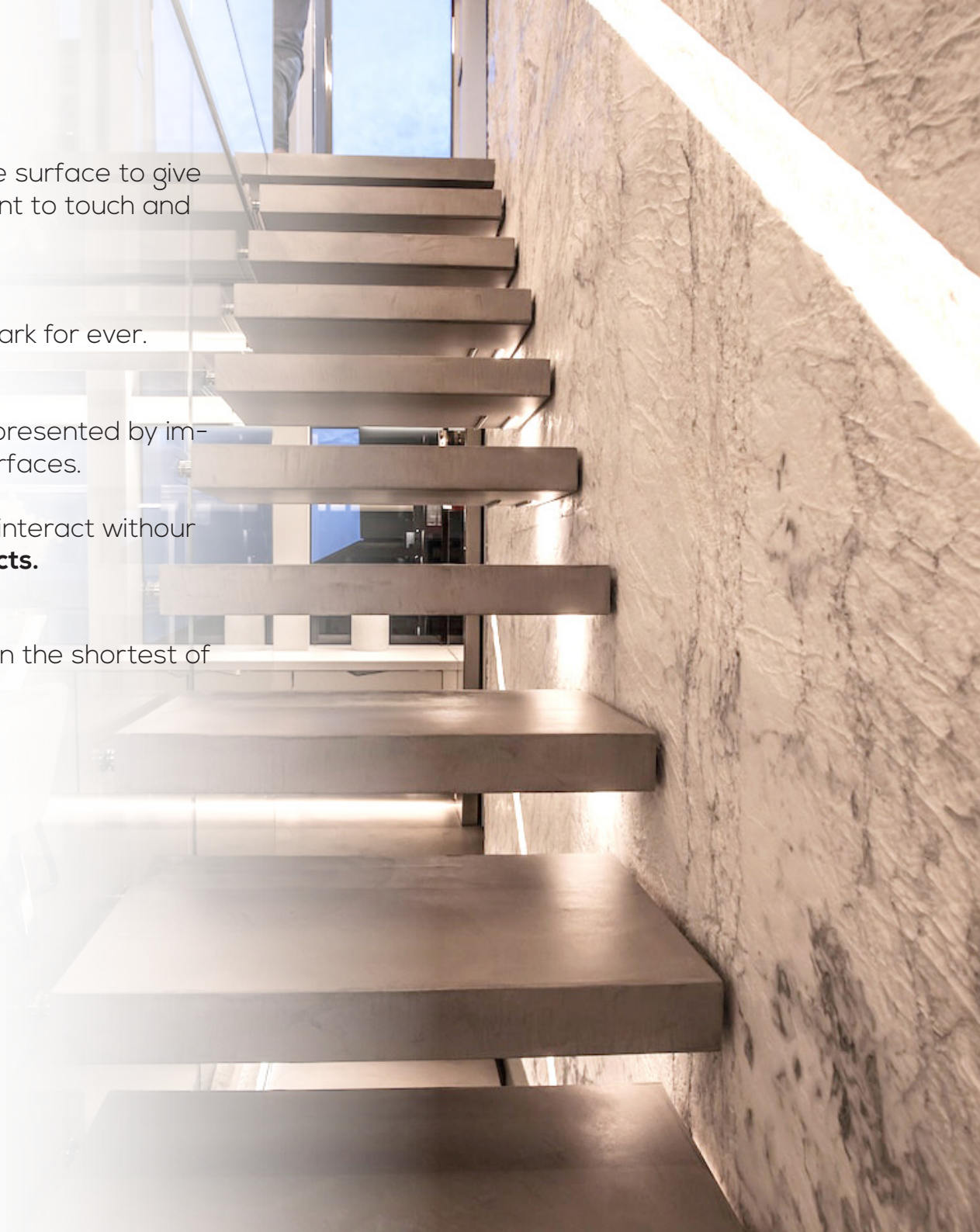
Air, water and fire continuously work on the surface to give that natural look which is extremely pleasant to touch and look at.

Natural forces guided by man's hand:
an unmistakeable imprint that leaves its mark for ever.

Sophisticated designs, rich **details**,
delicate textures but also the elegance represented by imperfections and lines shaping incredible surfaces.

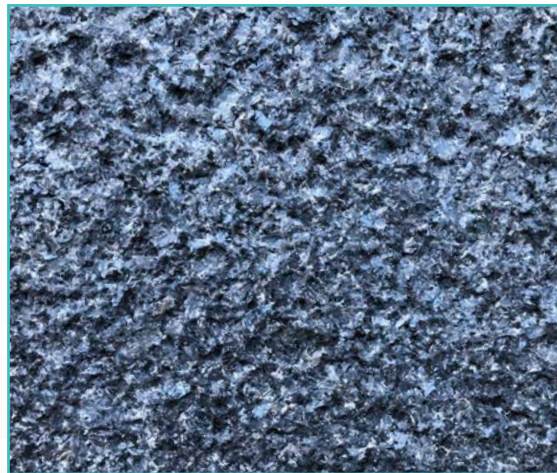
It is through these feelings that we love to interact with our client's ideas, bringing to life **amazing projects**.

Only accurate production management
can guarantee the best result is achieved in the shortest of time by using the least possible resources.

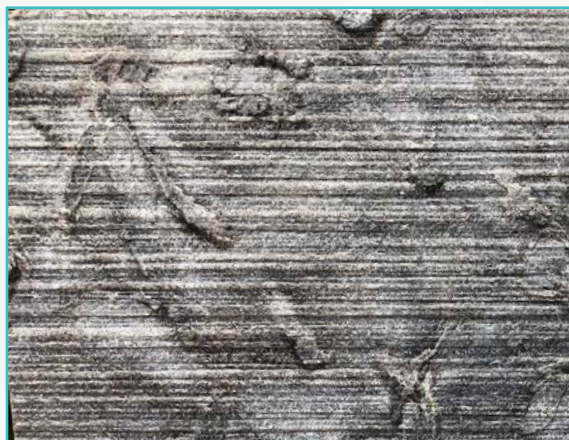




Corteccia
#C1



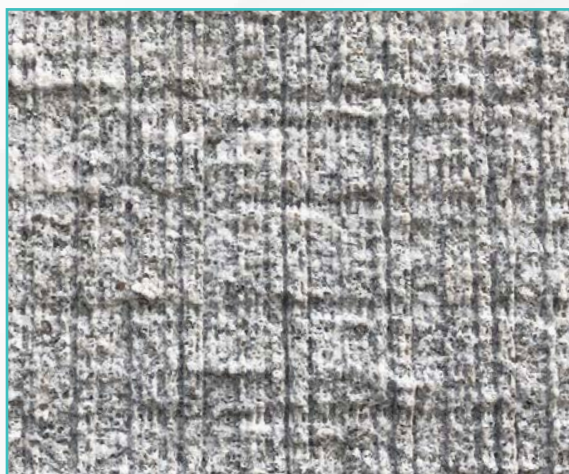
Crosta
#C7



Corteccia
#C2



GreenWave
#G1

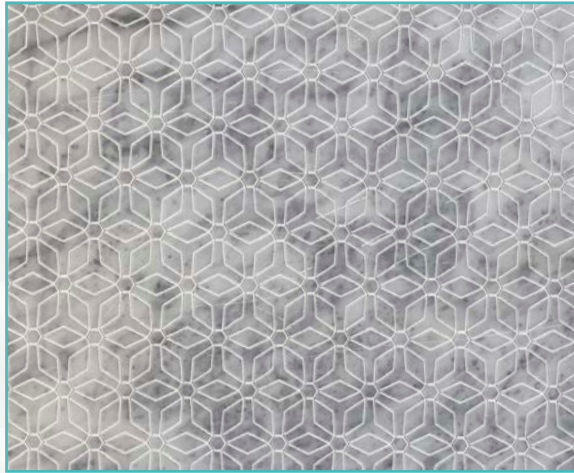


Corteccia
#C3



Tranche'
#T4





Laser
#L1
*



**
Laser
#L4



Wood
#W4



*
Laser
#L2



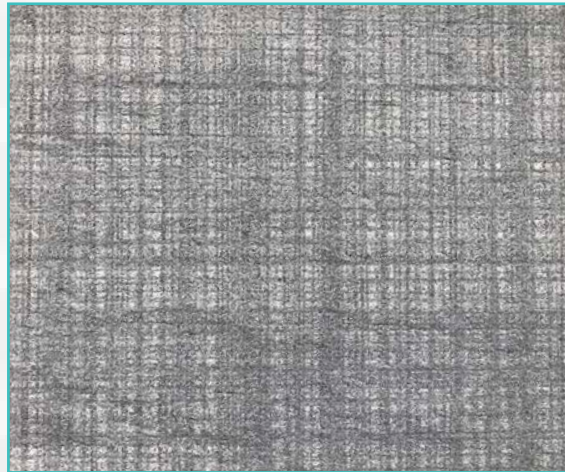
- * Engraved from vector file
- ** Engraved from picture



Rigato
#R1
5mm



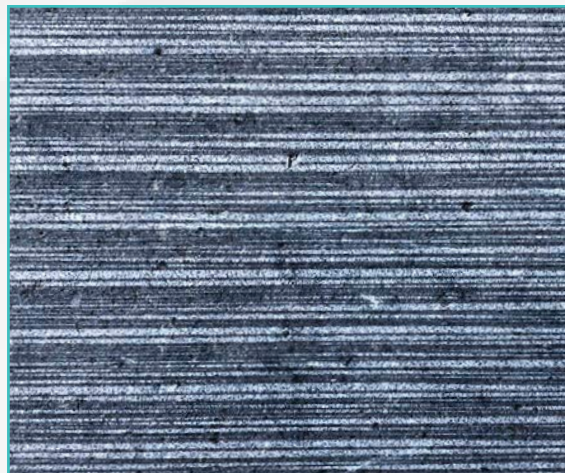
Rigato
#R2
5mm + 5 mm



Juta
#J1



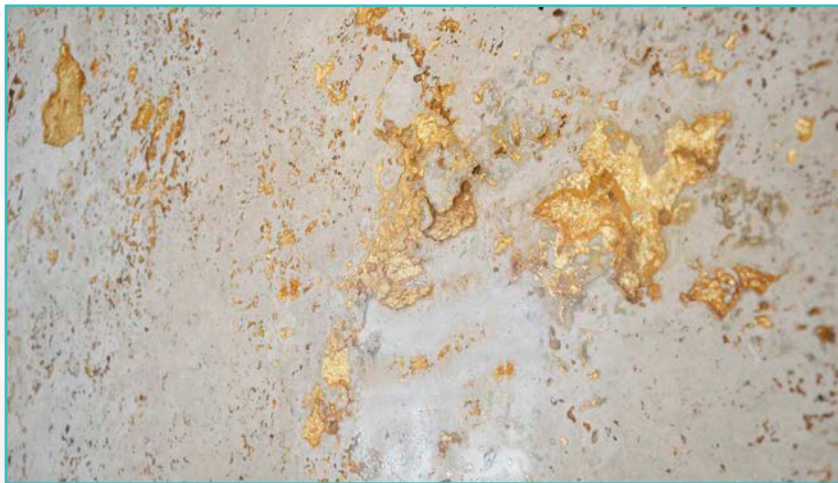
Antique'
on sanblasted
#A5



Wenpec
#W3



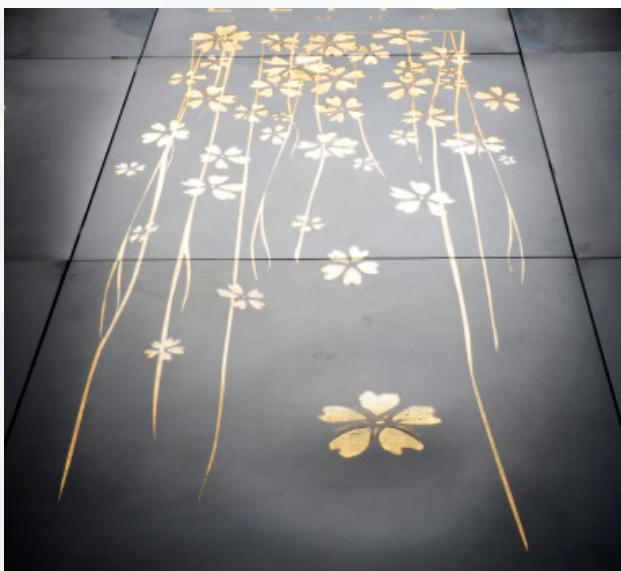
Carezza'
#C6



Travergold
#T5

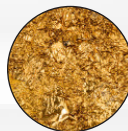


Natural Gold vein
#G9



Goldvein (pattern
#G7

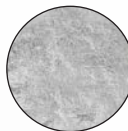
AVAILABLE CASTING



#golden brass leaf



#copper leaf



#silver leaf



Random Gold vein
#G8



Marble &More s.r.l
Via Umbria, 2 - Pietrasanta
+39 0584.792505
info@marblemore.com
www.marblemore.com