



PAYACHT
SPIRIT OF ITALY

MY FOREVER

From Sketch
to the Flesh

FROM SKETCH TO THE FLESH

MARBLE INTERIORS

00

INTRODUCTION
REFIT DESTINATION

01

STAIRS & UPPER DECK
GREEN WAVE

02

UPPER DECK
BACKLITBAR WHITE ONYX

03

MAIN DECK
SNOW WHITE

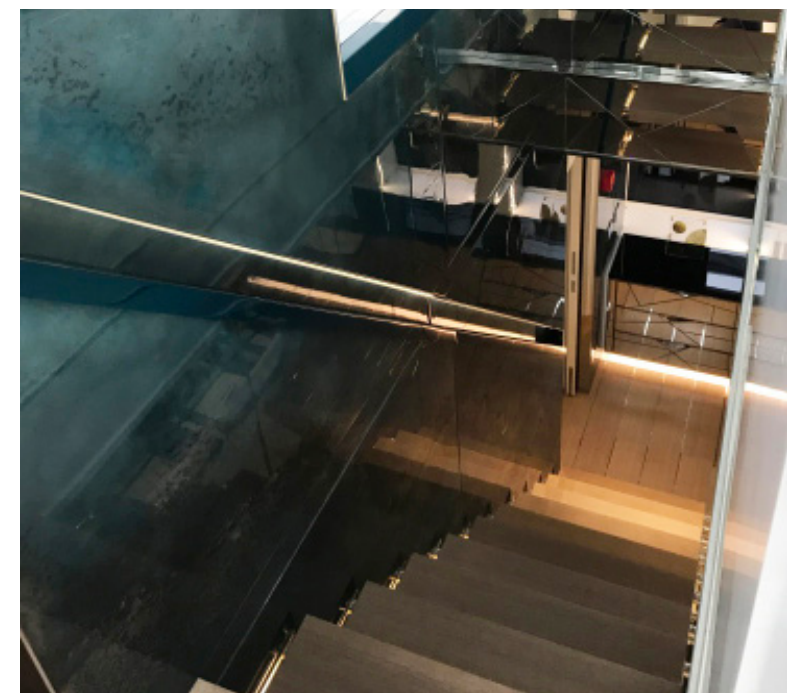
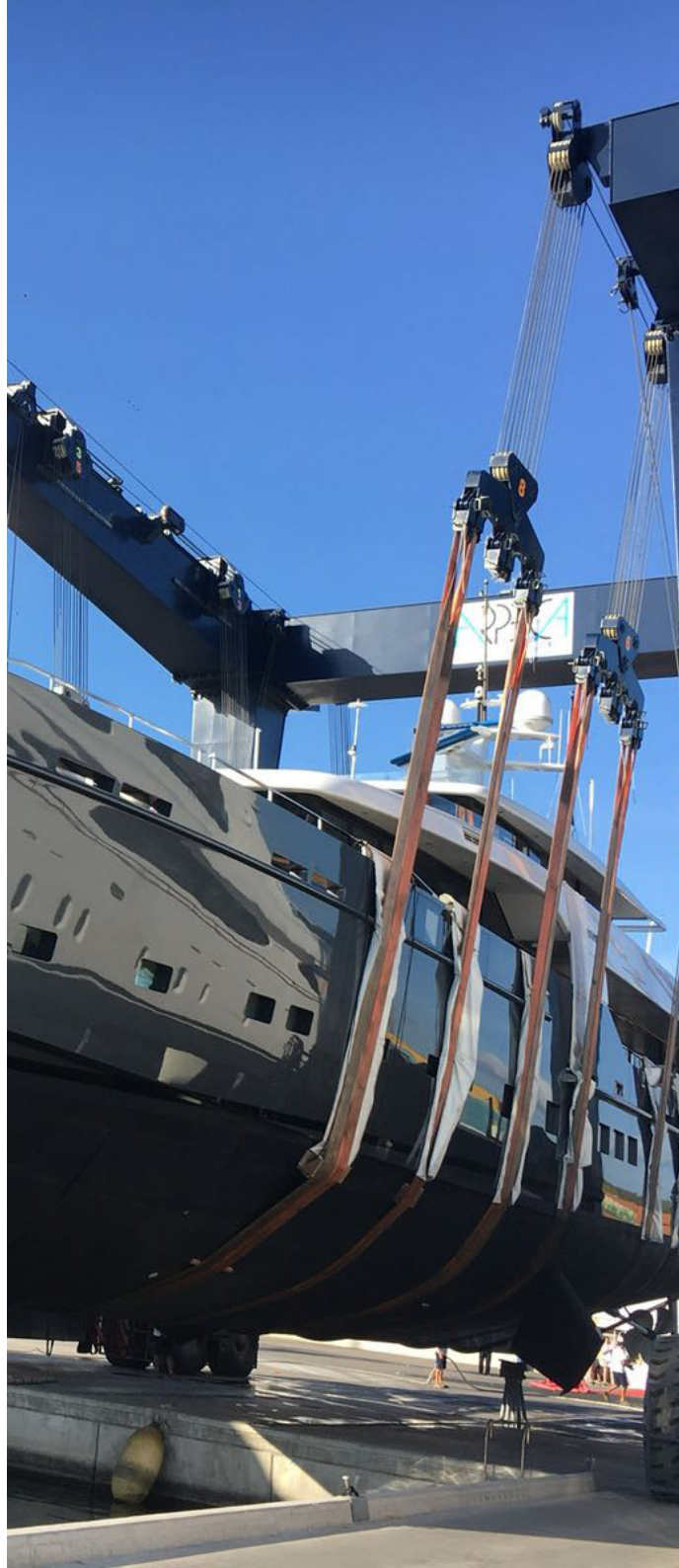
FROM SKETCH TO THE FLESH

REFIT DESTINATION

00

Large yacht extension and renovation, from a classical look to a more modern, luxury minimal style. Renovation works took place in Italian shipyard, which was in charge with the body renovation. In agreement with the designer, we identified, selected, engineered and produced the most appropriate stone to achieve the client's desired mood.

Engineered by Roberto Pedicone, architect



STAIRS & UPPER DECK

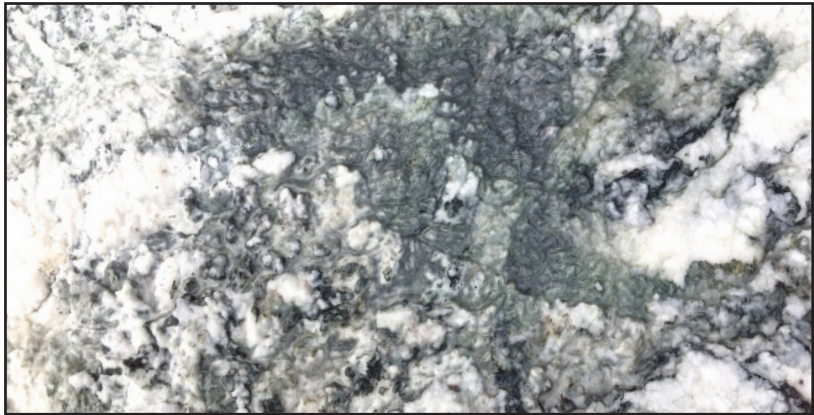
GREEN WAVE

01

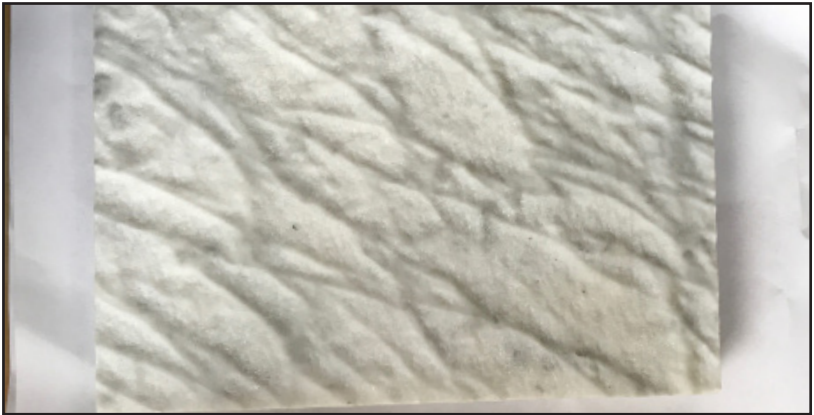
Accurate veining engineering creating a movement recalling waves motion, while special finishing – ‘stormy’ finished – was conceived to give GREEN WAVE marble a solid, rough look, as in a stone ‘ravaged by time’, with weight saving granted by lightweight stone applied to honeycomb backing.
Final outcome, to the satisfaction of the client, is descending into a natural grotto, excavated at sea.

Suggested Material

#1



#2



#3

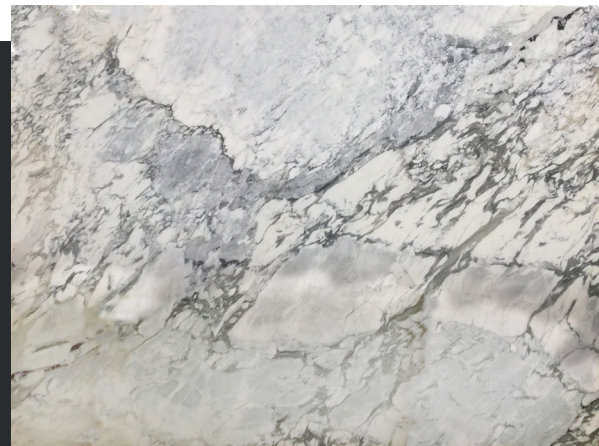


#4



Suggested Finishes



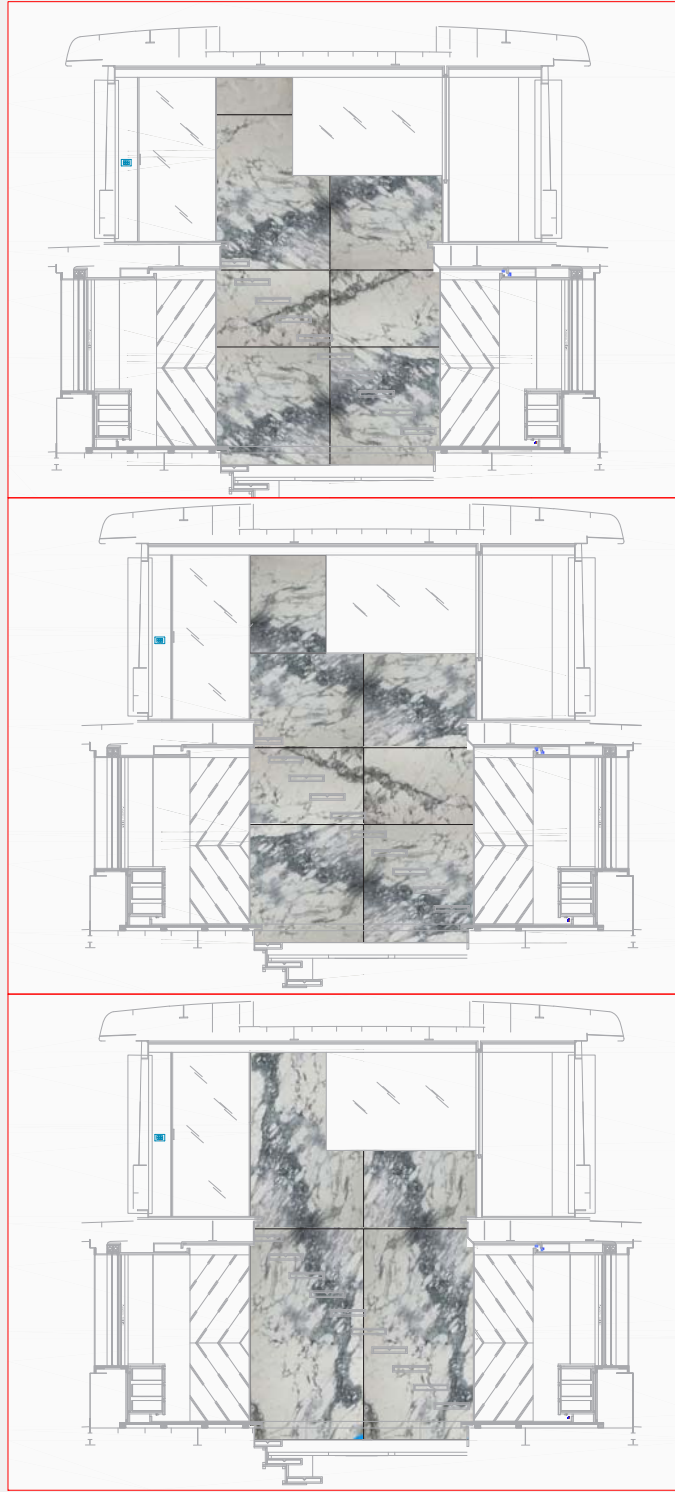
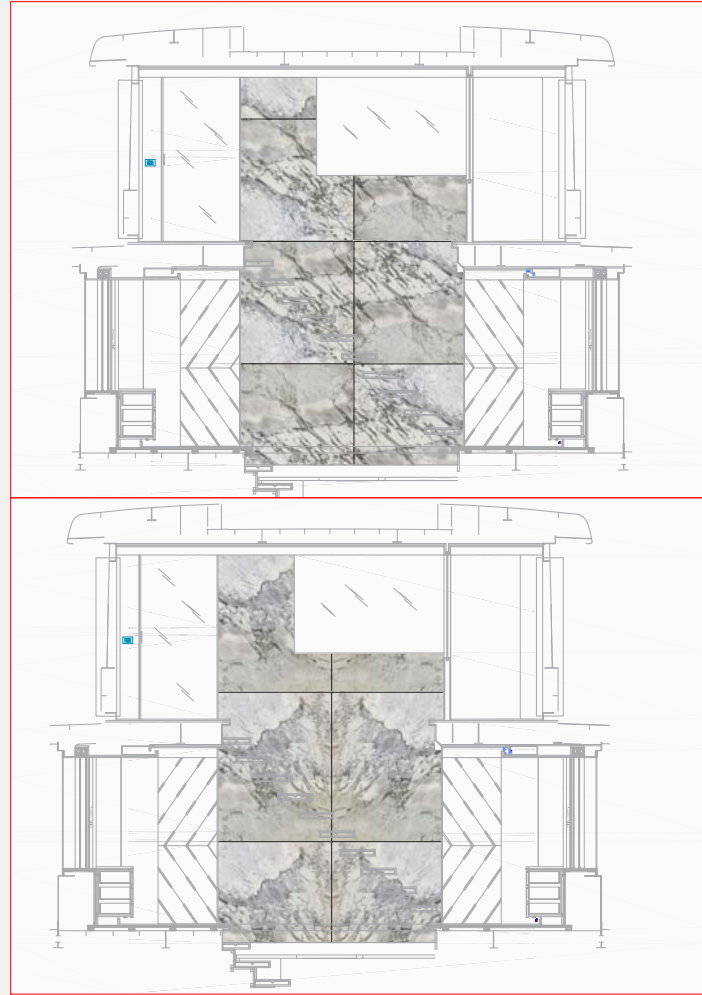
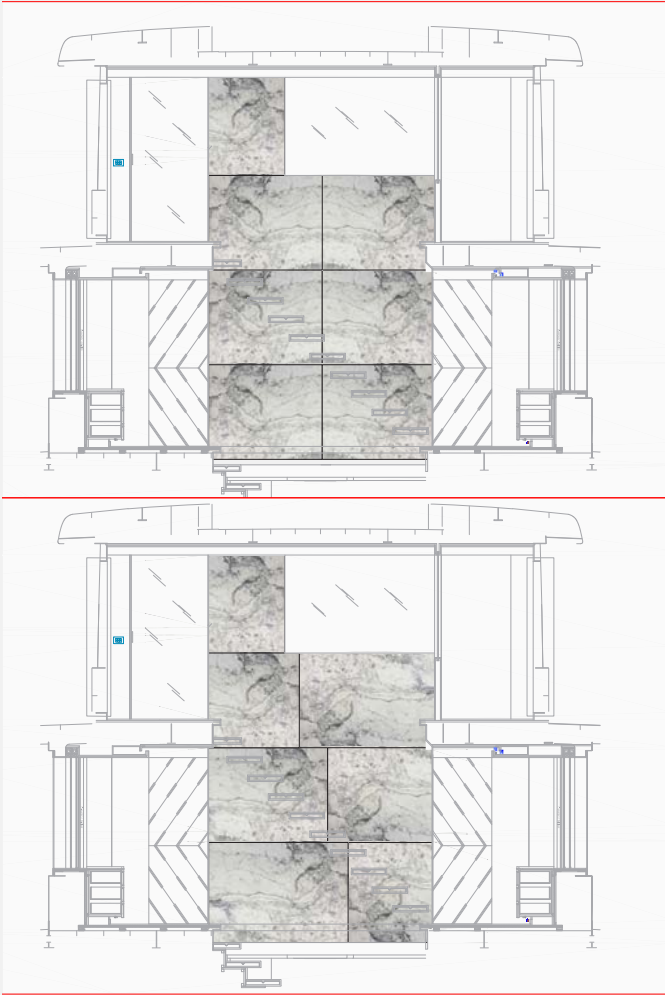


SOURCING
Before
Processing Slab



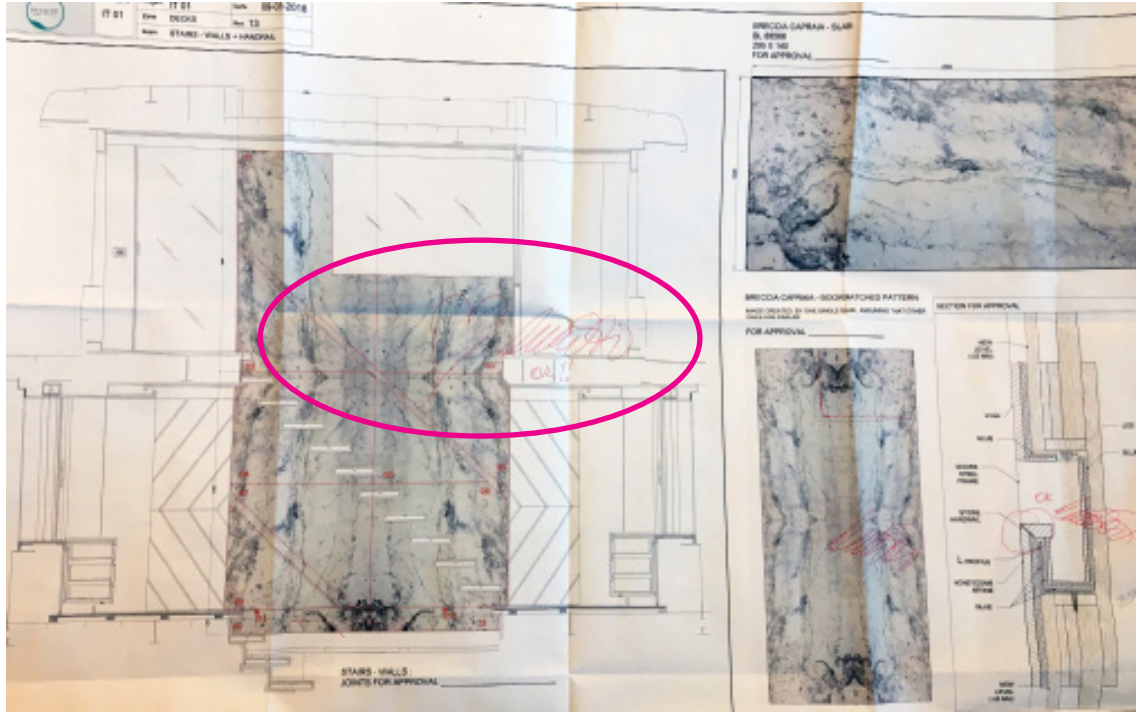
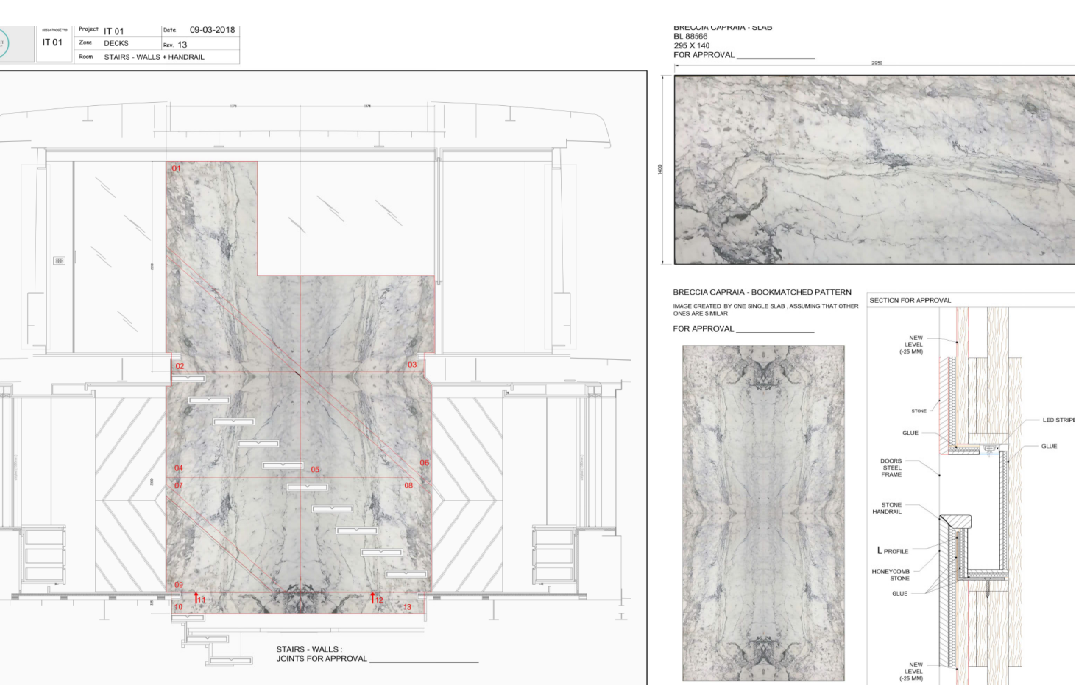
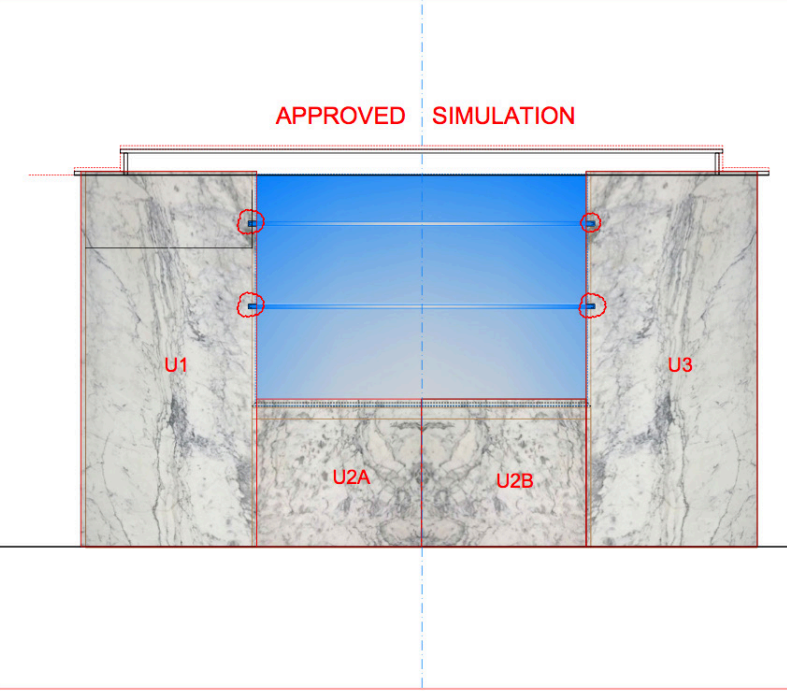
PROCESSING
After
Processing Slab





Simulation Sample

| UPPER DECK | | | | | |
|---------------|-------|----|------|------|-------|
| WALL CLADDING | | | | | |
| DIMENSION | MARCA | N° | A mm | B mm | SP mm |
| U1 | | 1 | 2008 | 945 | 23 |
| U1A | | 1 | 300 | 106 | 23 |
| U1B | | 1 | 561 | 106 | 23 |
| U1C | | 1 | 334 | 106 | 23 |
| U1D | | 1 | 2008 | 124 | 23 |
| U2A | | 1 | 891 | 784 | 23 |
| U2AT | | 1 | 895 | 129 | 23 |
| U2B | | 1 | 891 | 784 | 23 |
| U2BT | | 1 | 895 | 129 | 23 |
| U3 | | 1 | 2008 | 948 | 23 |
| U3A | | 1 | 300 | 106 | 23 |
| U3B | | 1 | 561 | 106 | 23 |
| U3C | | 1 | 334 | 106 | 23 |
| TOTALE | | 13 | | SOM | 5.93 |



Owner's representative
SIMULATIONS APPROVAL DOCS



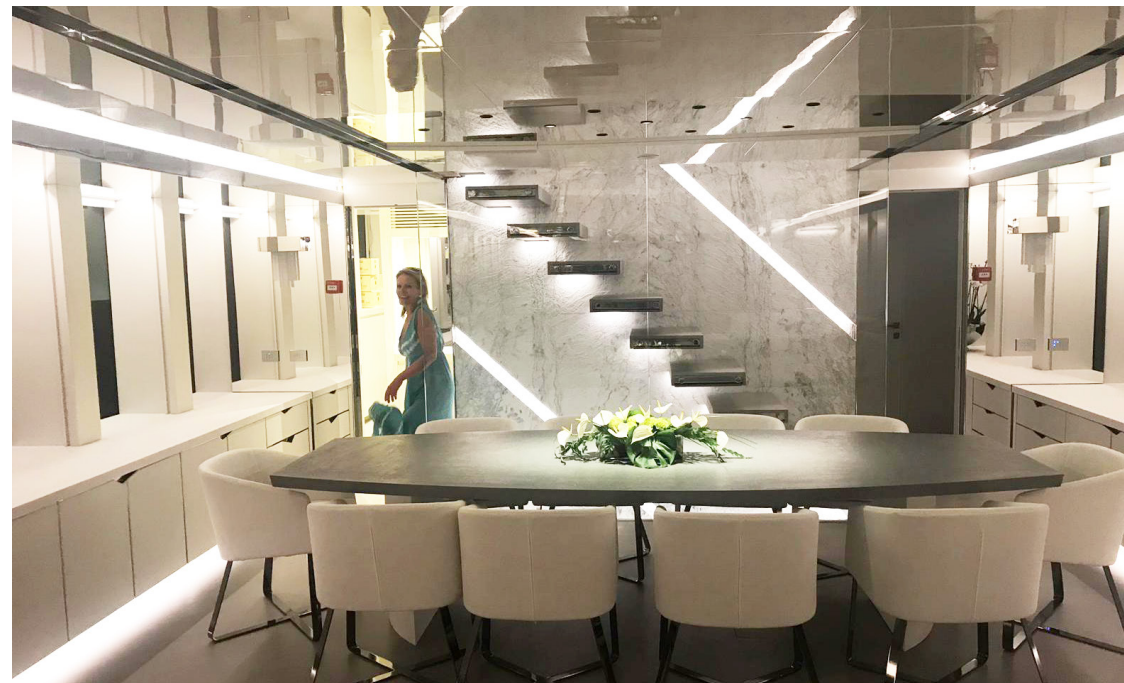
ON BOARD
PRELAY



WORKSHOP PRELAY



INSTALLATION ON BOARD



UPPER DECK

WHITE ONYX BACKLIT BAR

02

Scrupulous planning applied to engineering and production of lightweight, translucent onyx bar counter, thoroughly backlit, in order to grant resistance and full efficiency of backlighting system, carrying no blind areas or black spots.

Material Selection





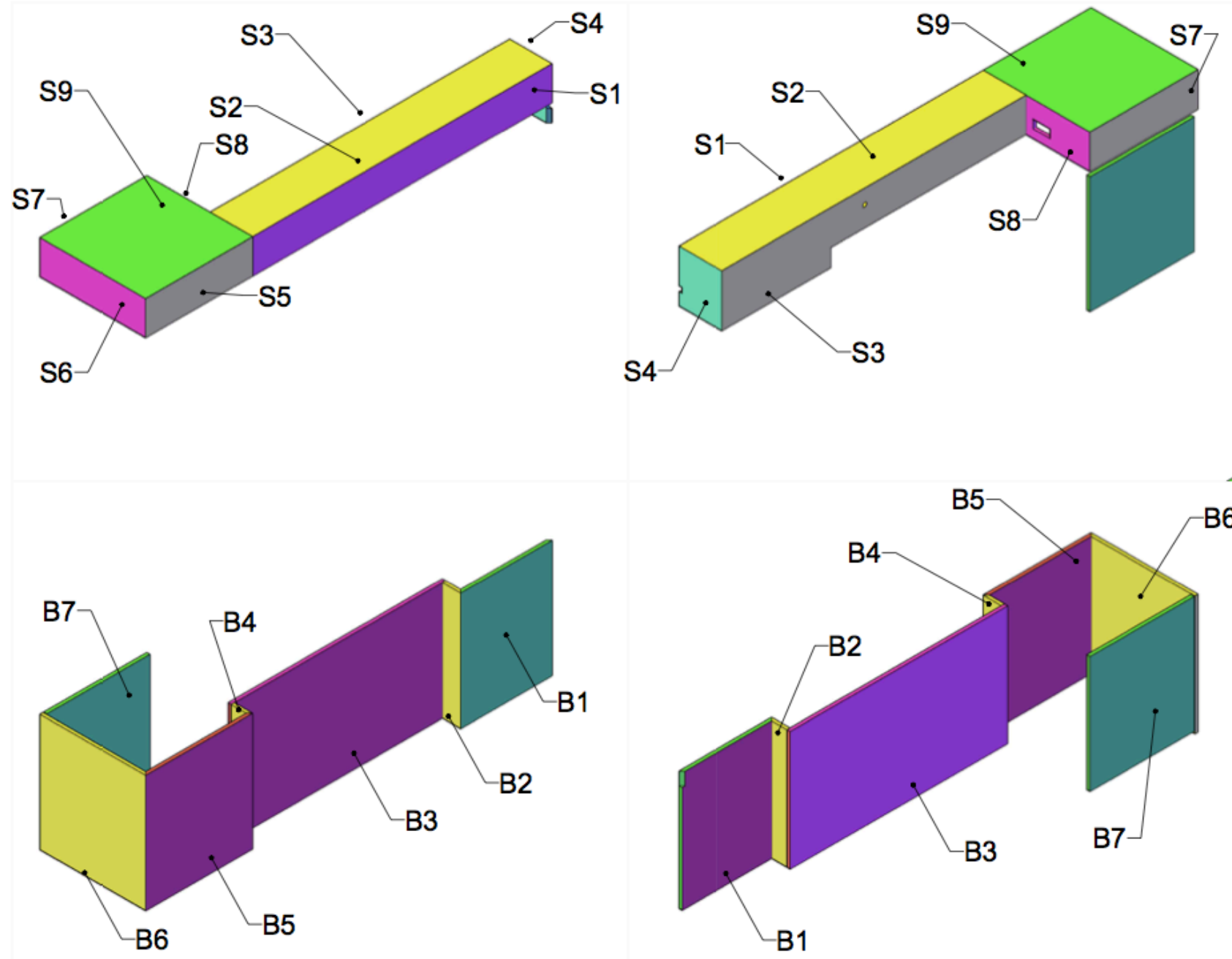
| | | | | |
|--------|---|--|-----|------|
| TOTALE | 7 | | SQM | 3,88 |
|--------|---|--|-----|------|



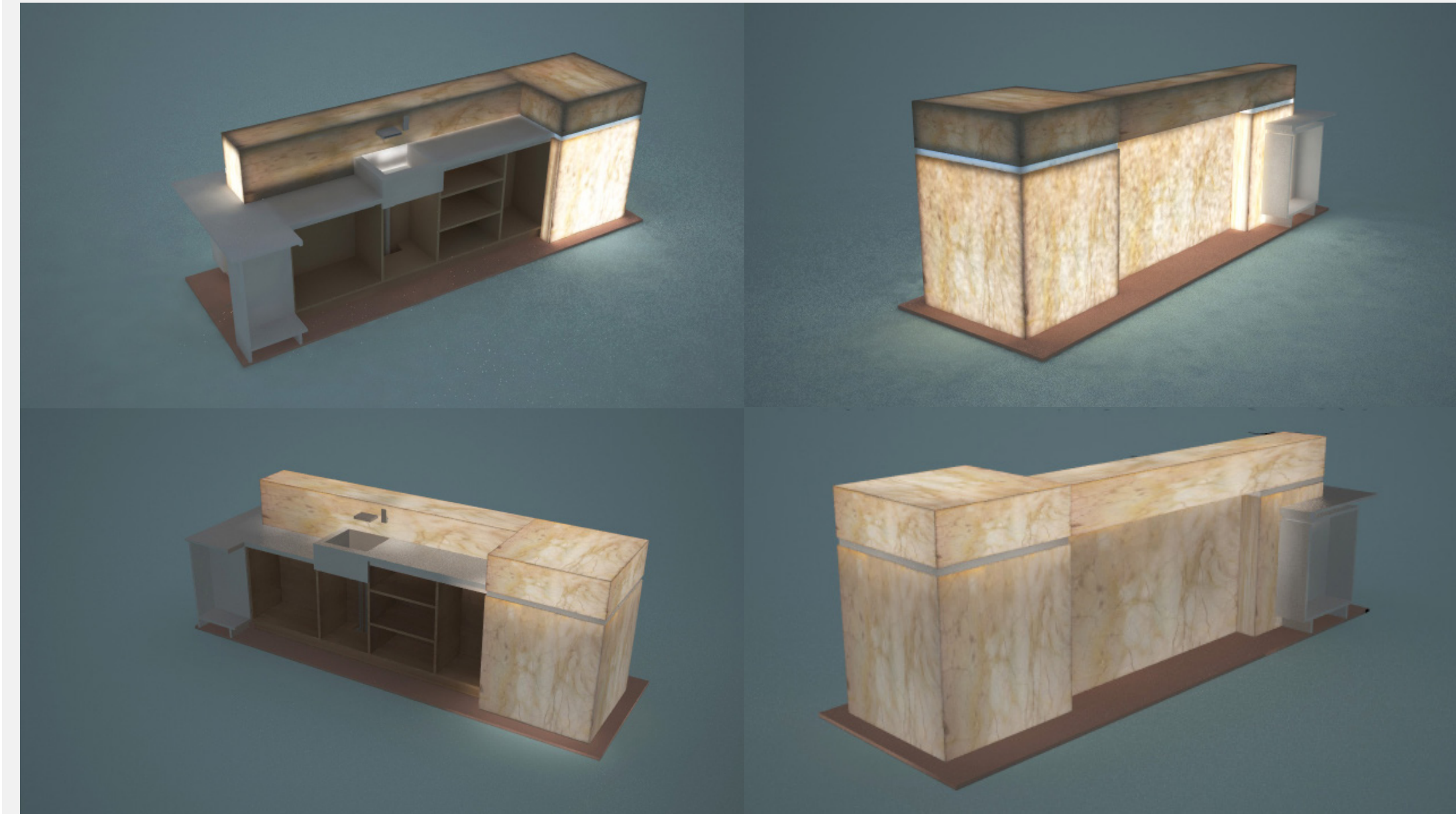
Wooden Structure Project



INQUADRAMENTO PEZZI



Counter Bar Top Takeoff



WHITE ONRYX
RGB BACKLIT BARTOP
3D RENDERINGS



Workshop Prelay



INSTALLATION
ON BOARD



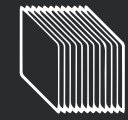
UPPER DECK

SNOW WHITE

03

Easily maintainable crystal white stone, with quartz accents to emphasise natural light off the windows while providing maximal protection against scratches and impacts.





SOURCING

Before
Processing Slab



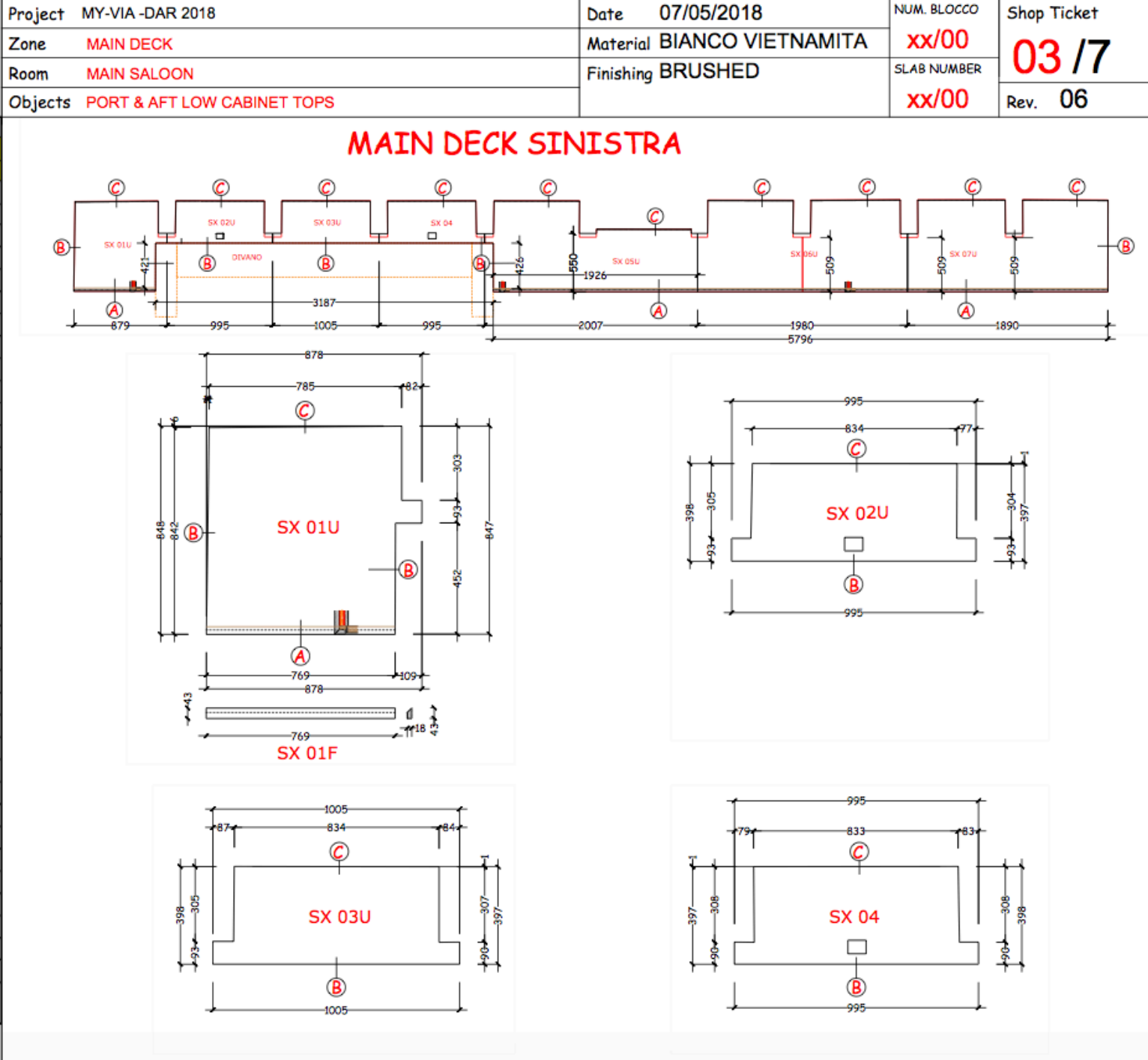
After
Processing Slab

PROCESSING



| | | | | | | | |
|--|------------------------|---------|-----------------------------|-----------|-------------------|-------------|-------------|
| <div><div>PAYACHT</div><div>SPRIT OF ITALY</div></div> | PROJECT CODE IT -01 | Project | MY-VIA -DAR 2018 | Date | 07/05/2018 | NUM. BLOCCO | Shop Ticket |
| | | Zone | MAIN DECK | Material | BIANCO VIETNAMITA | xx/00 | 03 /7 |
| | | Room | MAIN SALOON | Finishing | BRUSHED | SLAB NUMBER | |
| | | Objects | PORT & AFT LOW CABINET TOPS | | | xx/00 | Rev. 06 |

| PAGINA 1 | | | | | |
|-------------------------|----|------|-----|----|-------|
| MAIN DECK - MAIN SALOON | | | | | |
| SX LOW CABINET | | | | | |
| DIMENSION | | A | B | SP | SQM |
| MARCA | N° | mm | mm | mm | |
| TOP | | | | | |
| SX 01U | 1 | 878 | 848 | 19 | 0,745 |
| SX 02U | 1 | 995 | 398 | 19 | 0,396 |
| SX 03U | 1 | 1005 | 398 | 19 | 0,400 |
| SX 04U | 1 | 995 | 398 | 19 | 0,396 |
| SX 05U | 1 | 2009 | 856 | 19 | 1,720 |
| SX 06U | 1 | 1980 | 865 | 19 | 1,713 |
| SX 07U | 1 | 1890 | 867 | 19 | 1,639 |
| FRONTALE | | | | | |
| SX 01F | 1 | 769 | 43 | 19 | 0,033 |
| SX 05F | 1 | 1926 | 43 | 19 | 0,083 |
| SX 06F | 1 | 1980 | 43 | 19 | 0,085 |
| SX 07F | 1 | 1890 | 43 | 19 | 0,081 |
| TOTALE | 11 | | SQM | | 7,29 |





Workshop Prelay





Pa-yacht srl
Via Umbria, 2 50045 Pietrasanta (LU), Italia
Tel. +39 0584.792505
info@payacht.com - www.payacht.com



MY LOGICA - 2018